

Stunning 2-Bedroom Apartment with Sea View Terrace & Parking – Just 30 Minutes from the Palais

Ref. A2B261



- ✓ 30 min to le Palais des Festivals
 - ✓ Bedrooms : 1
 - ✓ 32 min far from the nearest train station
 - ✓ Bed(s) : 3
 - ✓ Superficy : 130 m²
 - ✓ Bath(s) : 2
- 42 BOULEVARD LEADER
06400 CANNES

+33 (0)6 62 84 01 01

Description

This spacious apartment accommodates 2 to 4 guests and features:

- 1 bedroom with a 160x200 cm double bed and access to the terrace
- 1 bedroom with two 90x200 cm single beds
- A fully equipped open-plan kitchen with a bar
- A large living and dining area opening onto a panoramic sea view terrace
- 2 separate bathrooms with walk-in showers, one of which includes a toilet
- An additional separate toilet
- Access to a shared garden
- A private parking space

This peaceful, lush apartment offers stunning sea views.

(Another apartment is available in the same villa – reference A3B132)

Caractéristiques

Sleeping capacity : 4

beds : 3

ac

equipped kitchen

microwave

tv

distance from train station : 32

bathrooms : 2

reversible ac

Oven

parking lot

wifi

distance from palais : 30

wcs : 1

heater

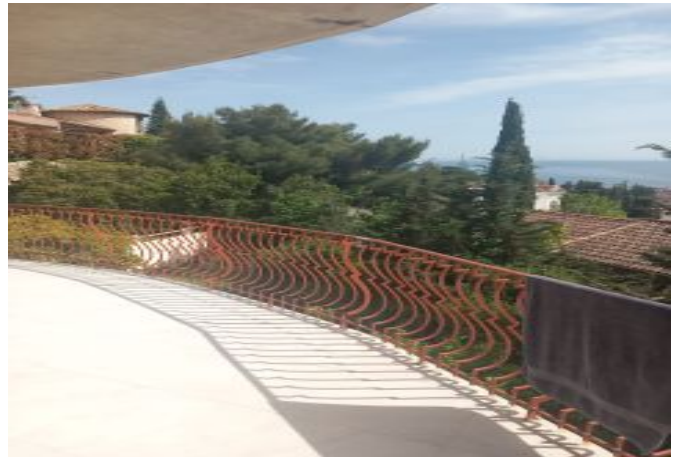
washer

terrace

Stunning 2-Bedroom Apartment with Sea View Terrace & Parking - Just 30 Minutes from the Palais

Ref. A2B261

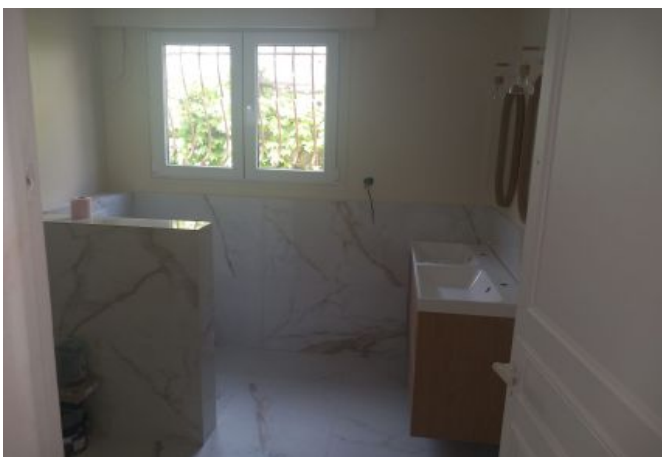
Photos



Stunning 2-Bedroom Apartment with Sea View Terrace & Parking - Just 30 Minutes from the Palais

Ref. A2B261

Photos



Stunning 2-Bedroom Apartment with Sea View Terrace & Parking - Just 30 Minutes from the Palais

Ref. A2B261

Photos



Stunning 2-Bedroom Apartment with Sea View Terrace & Parking – Just 30 Minutes from the Palais

Ref. A2B261

Localisation

The **Boulevard Leader** area in Cannes is a residential neighborhood located near the city center. It is highly regarded for its tranquility and proximity to local amenities, while still being relatively close to the beaches and the Croisette. This area offers high-quality housing, with beautiful views and a pleasant living environment, all while being in a well-served area with good transport links and shops.