



- ✓ 13 min to le Palais des Festivals
- ✓ Bedrooms : 6
- ✓ 14 min far from the nearest train station
- ✓ Bed(s) : 6
- ✓ Superficy : 160 m<sup>2</sup>
- ✓ Bath(s) : 4

25 Boulevard du moulin  
06400 Cannes

**+33 (0)6 62 84 01 01**

## Description

Charming and comfortable 6 bedroom house just a few steps from Cannes' historic center, fully renovated and spread over 3 levels.

It can accommodate 6 to 12 guests:

### **Level 1 (can be rented independently):**

- 1 bedroom with a double bed (160x200)
- 1 bedroom with a double bed (140x200) opening onto a balcony
- 1 bathroom with shower and double sink
- Main living area with dining space opening onto a balcony
- Open-plan, fully equipped kitchen
- 1 separate toilet
- 2 Balconies
- Wi-Fi
- Fully air-conditioned

### **Level -1 (can be rented independently together with Level -2):**

- 1 bedroom with a double bed (140x200)
- 1 bedroom with a double bed (140x200) opening onto a balcony

- 1 bedroom with a double bed (140x200) and en-suite bathroom with shower and toilet
- 1 independent bathroom with bathtub and toilet
- 1 separate toilet
- Balcony

## Level -2:

- Independent annex with 1 bedroom and en-suite bathroom with shower and toilet
- Spacious living room with dining area
- Separate, fully equipped kitchen
- 1 separate toilet
- Wi-Fi
- Fully air-conditioned

## THIS PEACEFUL HOUSE FEATURES A LARGE 60M<sup>2</sup> TERRACE

## Caractéristiques

---

Bathtub : 1	Sleeping capacity : 12	distance from train station : 14
beds : 6	bathrooms : 4	lots nb : 1
terrace /balcony area : 60	wcs : 5	
ac	reversible ac	Bathtub
heater	Self lock door	equipped kitchen
washer	dishwasher	mandate
clothes dryer	terrace	independent toilet
wifi		

## Photos



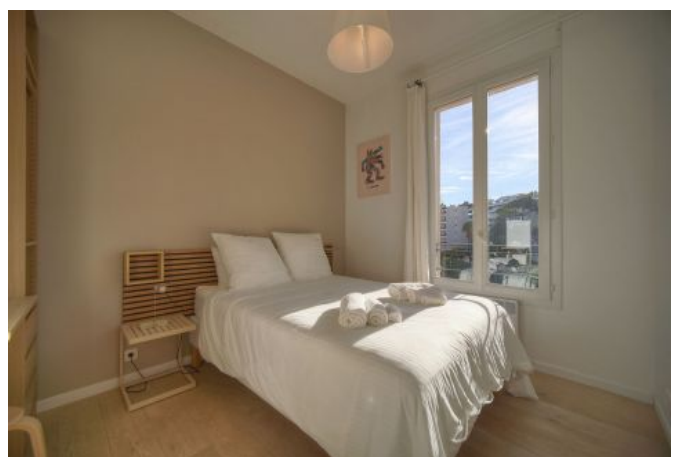
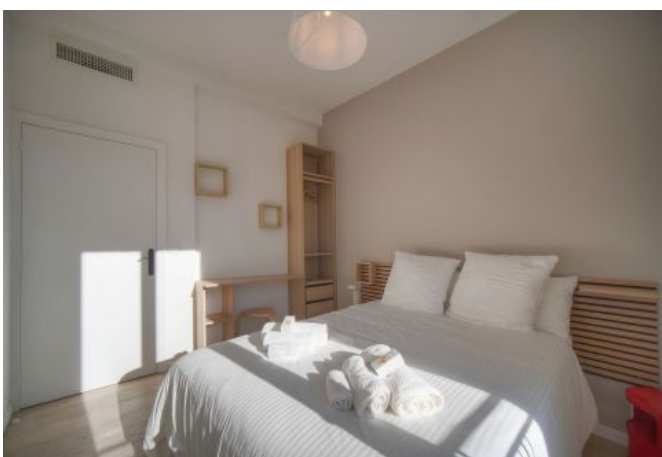
## Photos



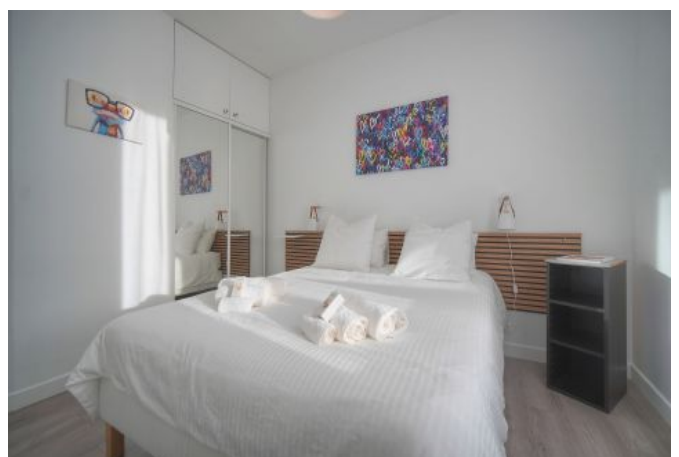
## Photos



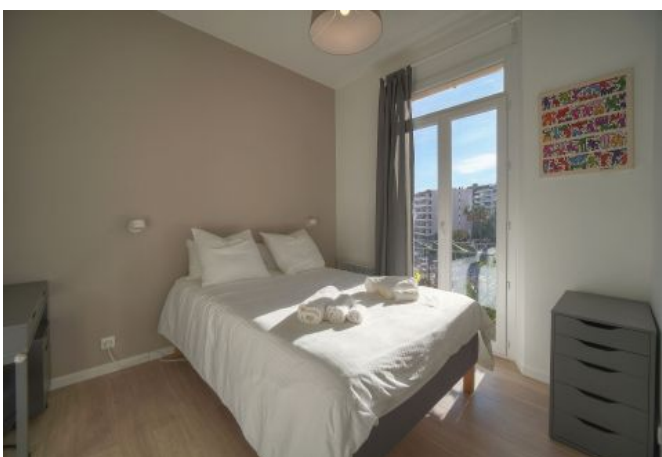
## Photos



## Photos



## Photos



## Photos



## Photos



## Photos



## Photos



CHARMING 6 BEDROOM HOUSE WITH TERRACE - 13 MINUTES FROM THE PALAIS DES FESTIVALS

Ref. A6B02

## Localisation

---

Located in the Stanislas area, close to the historic center (Le Suquet).