

Exceptional modern 2 bedroom apartment sea view 5 min from the palais des Festivals

Ref. A2B247



- ✓ 5 min to le Palais des Festivals
- ✓ Bedrooms : 2
- ✓ 5 min far from the nearest train station
- ✓ Bed(s) : 4
- ✓ Superficy : 69 m²
- ✓ Bath(s) : 2

29 boulevard de la Ferrage
06400 Cannes

+33 (0)6 62 84 01 01

Description

This modern bright and spacious 2 bedroom ensuite apartment further benefits with 2 terraces with spectacular views towards the sea and old town.

Situated in a residential residence, on the third floor with lift.

Will accommodate up to 2/6 guests in:

- 2 bedrooms each with two twin beds
- 2 ensuite shower rooms with toilets (1 of them has independant access also)
- Fully equipped American kitchen opening onto dining area and lounge with sofa bed
- Terrace with great sea and old town views

SPACIOUS AND COMFORT ; QUIET

Caractéristiques

Sleeping capacity : 4

beds : 4

reversible ac

Self lock door

dishwasher

wifi

distance from train station : 5

bathrooms : 2

lift

equipped kitchen

mandate

tv

distance from palais : 5

terrace /balcony area : 3

Bathtub

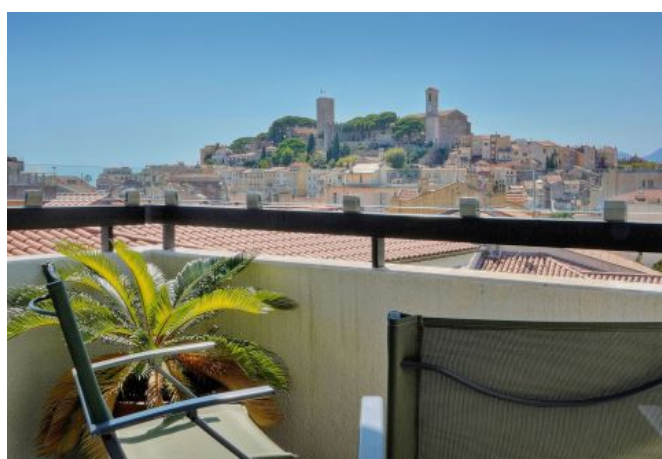
Oven

microwave

Exceptional modern 2 bedroom apartment sea view 5 min from the palais des Festivals

Ref. A2B247

Photos



Exceptional modern 2 bedroom apartment sea view 5 min from the palais des Festivals

Ref. A2B247

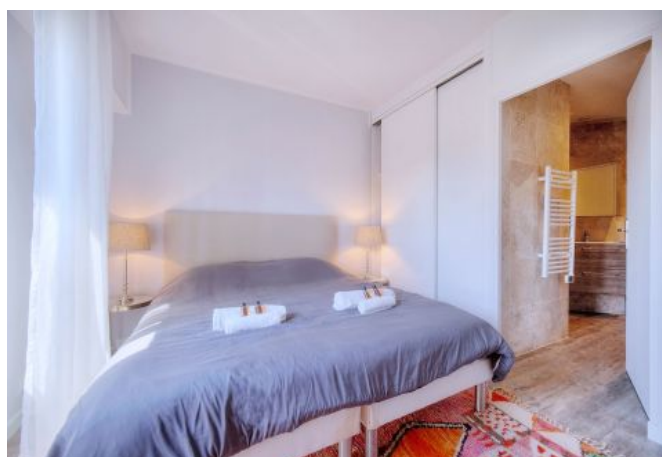
Photos



Exceptional modern 2 bedroom apartment sea view 5 min from the palais des Festivals

Ref. A2B247

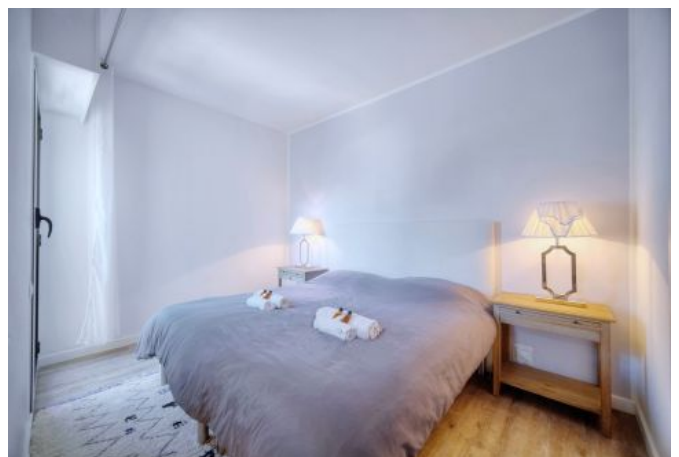
Photos



Exceptional modern 2 bedroom apartment sea view 5 min from the palais des Festivals

Ref. A2B247

Photos



Exceptional modern 2 bedroom apartment sea view 5 min from the palais des Festivals

Ref. A2B247

Photos



Exceptional modern 2 bedroom apartment sea view 5 min from the palais des Festivals

Ref. A2B247

Photos



Exceptional modern 2 bedroom apartment sea view 5 min from the palais des Festivals

Ref. A2B247

Photos



Exceptional modern 2 bedroom apartment sea view 5 min from the palais des Festivals

Ref. A2B247

Localisation
